

AUTOMATION FOR GARAGE DOORS

CHAIN-GUIDED AUTOMATION FOR SECTIONAL DOORS



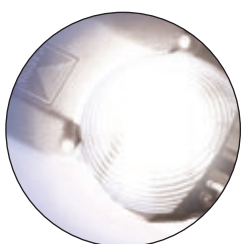
CARDIN PRO SERIES GL

The chain guided automation GL124 is made up of two elements complete in all their parts, which are assembled by simply slotting them together. An efficient and aesthetically designed high performance propulsion unit, featuring new technical solutions, and fitted with all the elements for operation under all working conditions it slots together with an extruded aluminium chain driven transmission. The motor attachment and chain drive head on the guide are structurally optimised using nylon fibre. The compact and robust propulsion unit is commanded by state of the art logic based on encoder control, which tracks the movement of the door, and on a self-learning programming procedure.

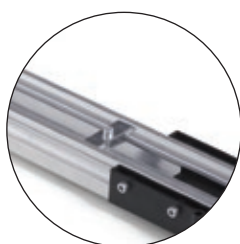
The unit is fitted with a direct current motor which uses an efficient system of kinematics protected by a special anti drag element that cancels out vibrations and variations in movement that can occur during the work cycle. The automation is fitted with courtesy lights and NiMH batteries that guarantee emergency operation during blackouts. The integrated electronic programmer is housed in a protective well that only leaves access to the programming controls, display and circuit protection fuses.

The carriage slides along the chain guide on specially lubricated castors. The manual release mechanism used to detach the carriage from the chain guide is carried out using a release cord that separates the door from the automation. Repositioning takes place automatically whenever foreign objects get in the way of the door as it is moving. The electronic control unit is completed by the anti-crush and "soft start" and "soft stop" functions and a display that monitors the programming stages and counts the number of manoeuvres carried out by the machine.

Chain guide to be ordered apart.



COURTESY LIGHT



ALUMINIUM CHAIN GUIDE



INTEGRATED ELECTRONICS



DIP-SWITCH SETTING



SELF-PROGRAMMING

CARDIN PRO SERIES GL



PRODUCT DESCRIPTION

ORDER NUMBER

SELF-PROGRAMMING ELECTROMECHANICAL UNIT WITH A 24Vdc MOTOR

Encoder controlled integral automation fitted with an electronic programmer, an S449 radio receiver card, battery charger and NIMH batteries.

Digital work time control.

Command inputs: TA, TC and TB.

Safety inputs: photocells, safety edge (N.C. contact or 8.2k Ω).

Chain guide to be ordered apart.



For sectional doors:

- maximum height 2.7m with a 3000mm chain guide
- maximum height 3.2m with a 3500mm chain guide
- maximum height 4.2m with a 4500mm chain guide
- maximum height 5.7m with a 6000mm chain guide

OPTIONAL SLOT-IN CARD

Functions:

- traffic light output for 2 traffic lights (red, green);
- programmable potential free output, impulsive or continuous (courtesy light 100 W);
- digital safety edge management input.

GL124EBSS



YPR124SCL00



CARDIN PRO SERIES GL



ACCESSORY DESCRIPTION

ORDER NUMBER

ALUMINIUM CHAIN GUIDE

Length 3000mm.

GL124S30

Length 3500mm.

GL124S35

Length 4500mm.

GL124S45

Length 6000mm.

GL124S60



ADAPTER

Allows the chain guided automation to be used on counterbalanced garage doors.

GL1024AC



EXTERNAL RELEASE CORD

Length 2000mm.

GL20SB

Length 4000mm.

GL20SB4



CARDIN PRO SERIES GL



TECHNICAL DATA

MOTOR SPECIFICATIONS

		GL124EBSS
Motor power supply	Vdc	24
Nominal electrical input	A	3
Power input	W	130
Duty cycle	%	70
Drag speed	m/min	7
Maximum travel distance	mm	5700
Operating temperature range	°C	-20°...+55
Protection grade	IP	40

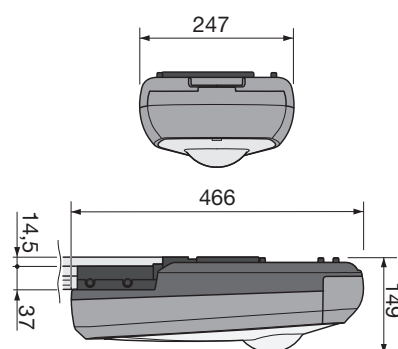
PROGRAMMER SPECIFICATIONS

Power supply	Vac	230
Nominal electrical input	A	0,9
Maximum power yield	W	190

BUILT-IN RECEIVER CARD

Reception frequency	MHz	433.92
Number of channels	No	4
Number of functions	No	2
Number of stored codes	No	300

OVERALL DIMENSIONS

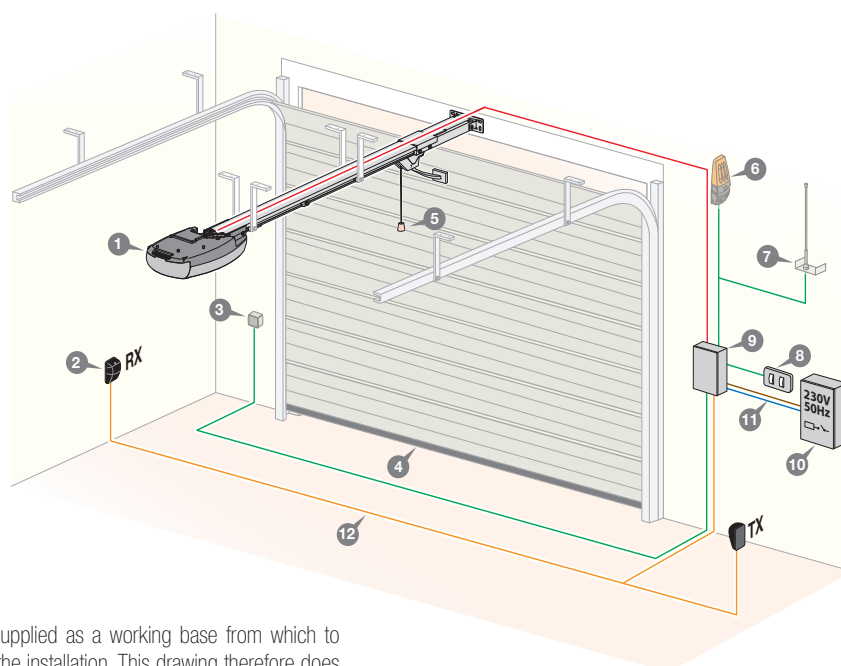


GL124EBSS

INSTALLATION EXAMPLE

LEGEND

- 1 Geared motor + built-in programmer
- 2 Photoelectric cells
- 3 Mechanical selector switch
- 4 Anticrush safety edge
- 5 Release cord
- 6 External warning lights
- 7 External aerial
- 8 Wall mounted switch TB - TD
- 9 Shunt box
- 10 All pole circuit breaker
- 11 Mains cable 230Vac
- 12 Channelling route for low voltage wires



Attention: The drawing is purely indicative and is supplied as a working base from which to choose the Cardin electronic components making up the installation. This drawing therefore does not lay down any obligations regarding the execution of the installation.

CHAIN-GUIDED AUTOMATION FOR SECTIONAL DOORS



CARDIN TRADE SERIES GL ZEN

Chain guided automation for residential sectional and counterbalanced doors up to 12m². An efficient and robust 24V propulsion unit with an in-built programmer fitted with all the elements for operation under all working conditions, it slots together with a steel chain driven transmission guide available in various lengths.

The propulsion unit is commanded by state of the art logic based on encoder control, with deceleration in the opening and closing directions, which tracks the movement of the door. The system is based on a self-learning programming procedure with function setting using dip-switches.

The automation is fitted with courtesy lights and an input specifically tailored for 8K2 safety edges.

The manual release mechanism used to detach the carriage from the chain guide is carried out using a release cord that separates the door from the automation. Repositioning takes place automatically whenever foreign objects get in the way of the door as it is moving. The electronic control unit is completed by the anti-crush and "soft start" and "soft stop" functions.

The complete range of products have been designed and constructed in accordance with the safety standards in force and feature automatic, semi-automatic, manual and remote control functions.

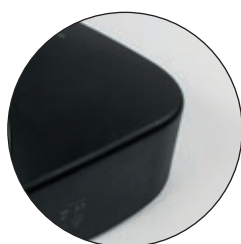
Open collector:

The product range is factory set for the insertion of an open collector receiver card that guarantees compatibility with all the radio control series available in the Cardin catalogue.

Chain guide to be ordered apart.



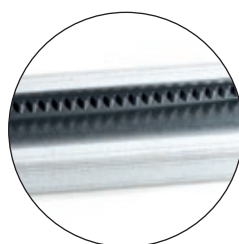
EXTERNAL RELEASE CORD



ROBUST PROTECTIVE CASING



LED LIGHTING



CHAIN GUIDE



INTEGRATED ELECTRONICS

CARDIN TRADE SERIES GL



PRODUCT DESCRIPTION

ORDER NUMBER

SELF-LOCKING GARAGE DOOR MOTOR

for residential use, with an encoder controlled 24V motor and in-built electronic programmer with LED courtesy lights. Maximum drag force 600N.

3,9m
h-max

9 m²

GL ZEN60E



SELF-LOCKING GARAGE DOOR MOTOR

for residential use, with an encoder controlled 24V motor and in-built electronic programmer with LED courtesy lights. Maximum drag force 1000N.

3,9m
h-max

12 m²

GL ZEN100E



CHAIN GUIDE

Pre-assembled single unit guide with chain and accessories. (length 3200mm)

2 piece pre-assembled guide with chain and accessories. (length 1600mm - 1600mm)

3 piece pre-assembled guide with chain and accessories. (length 1600mm - 1600mm - 1060mm)

ZENGB1U

ZENGB2U

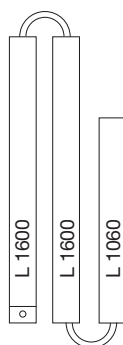
ZENGB4U



ZENGB1U



ZENGB2U



ZENGB4U

CARDIN TRADE SERIES GL



ACCESSORY DESCRIPTION

ORDER NUMBER

EXTERNAL RELEASE CORD KIT

with a personalised key for counterbalanced or sectional garage doors.

KSZEN



ADAPTER

Allows the chain guided automation to be used on counterbalanced garage doors.

GL1024AC



FASTENING BRACKETS

ZEN ST2



HOLDING BRACKET

large holding bracket for heavy doors.

SUPZEN



BATTERY CHARGER 24V

for use with 24V programmers.

CB24

EXTERNAL BOX

with 2 batteries 12V 7Ah.

SPB24



POWER SUPPLY KIT

Solar panels for use with all 24Vdc automation.

SUNPOWER



CARDIN TRADE SERIES GL



TECHNICAL DATA

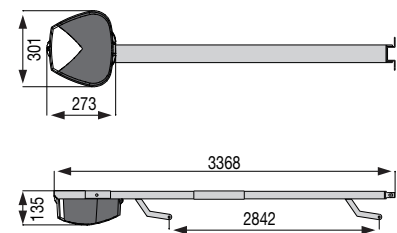
MOTOR SPECIFICATIONS

		GL ZEN60E	GL ZEN100E
Motor power supply	Vdc	24	24
Nominal electrical input	A	4	5
Power input	W	100	130
Duty cycle	%	60	60
Drag speed	m/min	9	9
Maximum thrust	N	600	1000
Max. travel distance	mm	3900	3900
Operating temperature range	°C	-20°...+55	-20°...+55
Protection grade	IP	30	30

PROGRAMMER SPECIFICATIONS

Power supply	Vdc	24	24
Nominal electrical input	A	4	4
Maximum power yield	W	230	260

OVERALL DIMENSIONS



GL ZEN60E - GL ZEN100E

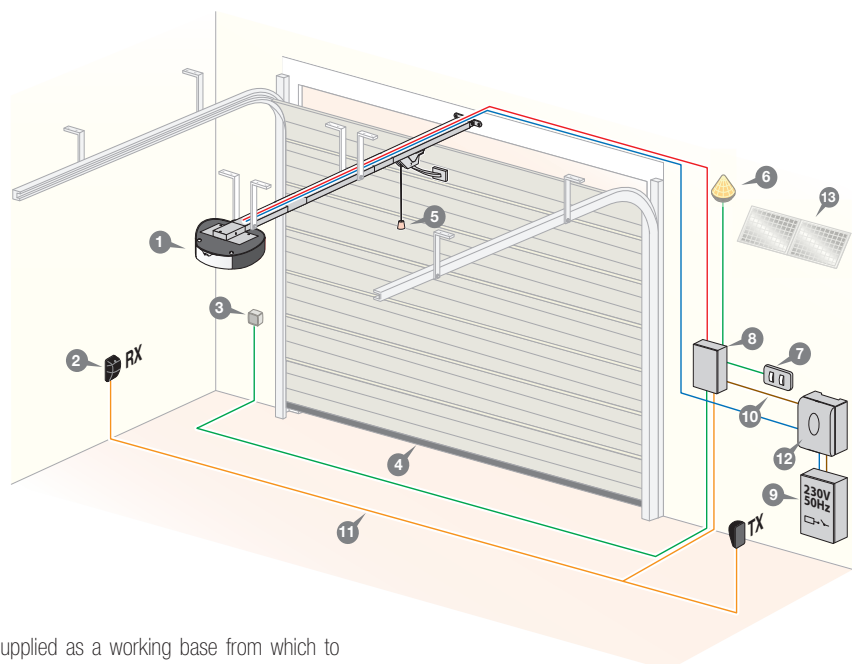
OPTIONAL RECEIVER CARD

The product range is factory set for the insertion of an open collector receiver card that guarantees compatibility with all the radio control series available in the Cardin catalogue.

INSTALLATION EXAMPLE

LEGEND

- 1 Geared motor + built-in programmer
- 2 Photoelectric cells
- 3 Mechanical selector switch
- 4 Anticrush safety edge
- 5 Release cord
- 6 External warning lights with aerial
- 7 Wall mounted switch TB - TD
- 8 Shunt box
- 9 All pole circuit breaker
- 10 Mains cable 230Vac
- 11 Channelling route for low voltage wires
- 12 Sun Power
- 13 Solar panels



Attention: The drawing is purely indicative and is supplied as a working base from which to choose the Cardin electronic components making up the installation. This drawing therefore does not lay down any obligations regarding the execution of the installation.



www.cardin.it